

Gerdau Petersburg Mill

Overview



WORLDWIDE



Production of long, special, and flat steel, and iron ore



Industrial presence throughout the Americas



>40 steel producing locations, not including commercial, scrap operations, and joint ventures.

NORTH AMERICA



Two divisions: Gerdau Long Steel and Gerdau Special Steel



Headquarters in Tampa, FL (GLN) and Jackson, MI (GSN)



11 mills, 24 scrap yards, and five shredders, along with rail products, grinding ball, and finishing sites

GLN AT A GLANCE

Gerda Long Steel is a network of mills, scrap recycling facilities, and downstream operations which serves customers in the U.S. and Canada.



- 9 mills: 3 in Canada; 6 in the U.S.
- Employ about 4,500 people
- Products: structural steel, piling, rebar, merchant bar, and special bar quality
- Markets: agricultural, automotive, energy, civil construction, distribution, industrial, and mining

A map of the United States with state boundaries outlined in white. The map is set against a dark blue background. The western coast of the US is highlighted in yellow. Numerous location pins are placed across the map, primarily in the central and eastern regions. The pins are color-coded: blue for 'Special Steel', yellow for 'Long Steel', and green for 'Metals Recycling'.

LOCATIONS



Special
Steel



Long
Steel



Metals
Recycling

Not Mapped Downstream: Paragould Rail, AR;
Huntington Heat Treat, IN; Duluth Grinding Ball, MN;
St. Paul, MN; Sand Springs Rail, OK; St. Jean Rail,
QC; Lancaster Rail, SC



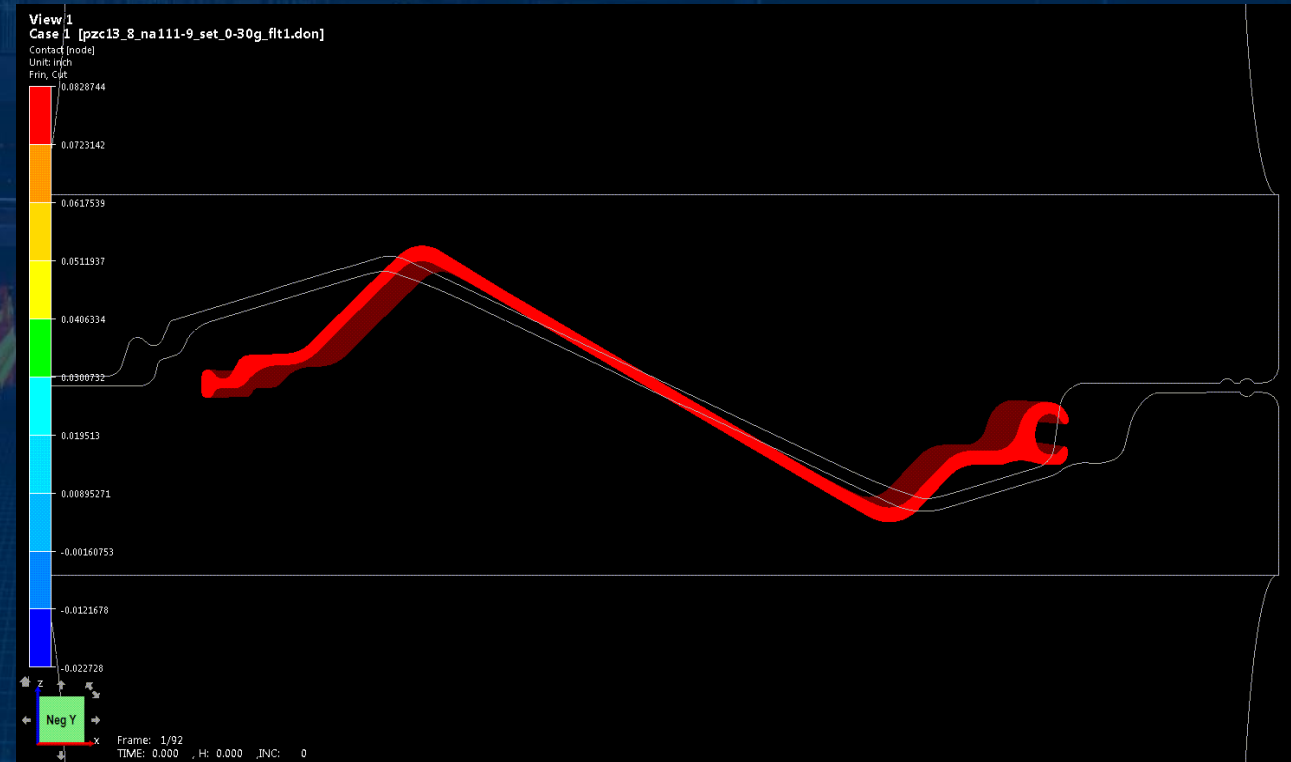
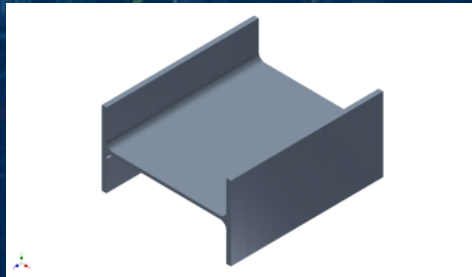
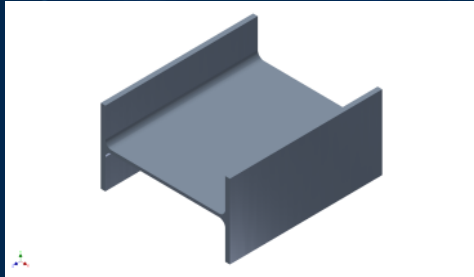
- Facility opened as Chaparral Virginia in June 1999.
- PTB and MID were purchased in 2007
- The Petersburg Mill occupies over 700 acres (mill & finished goods) with over 1,360 overall acreage
- We currently employ over 440 direct employees
- 185+ products

Petersburg Products

**Wide Flange Beam and
H-Pile Families**

**PZC Families PZC13,
PZC18, PZC26, PZC39**

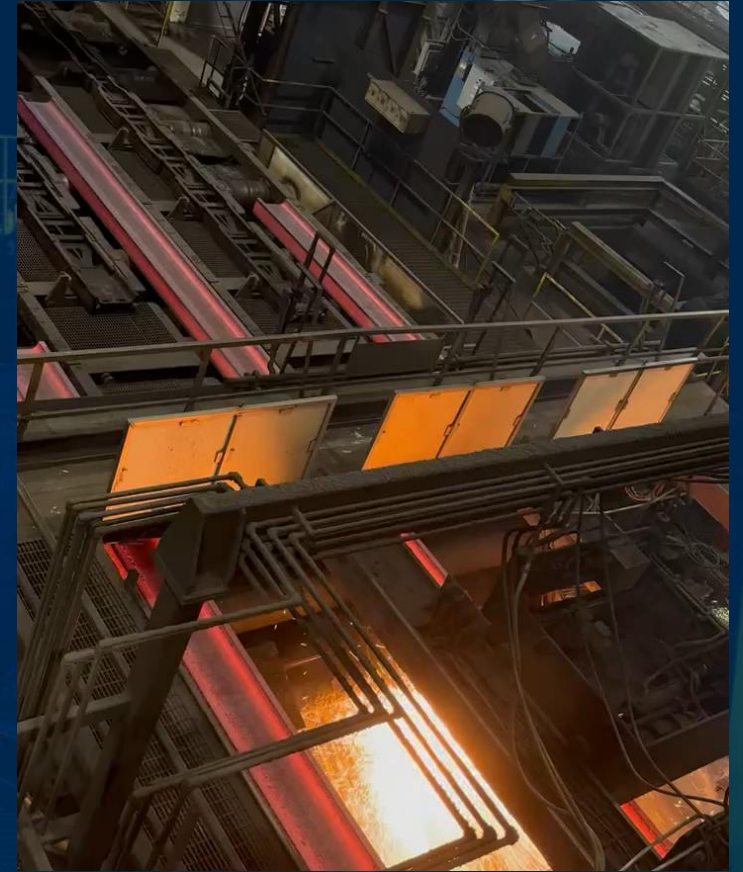
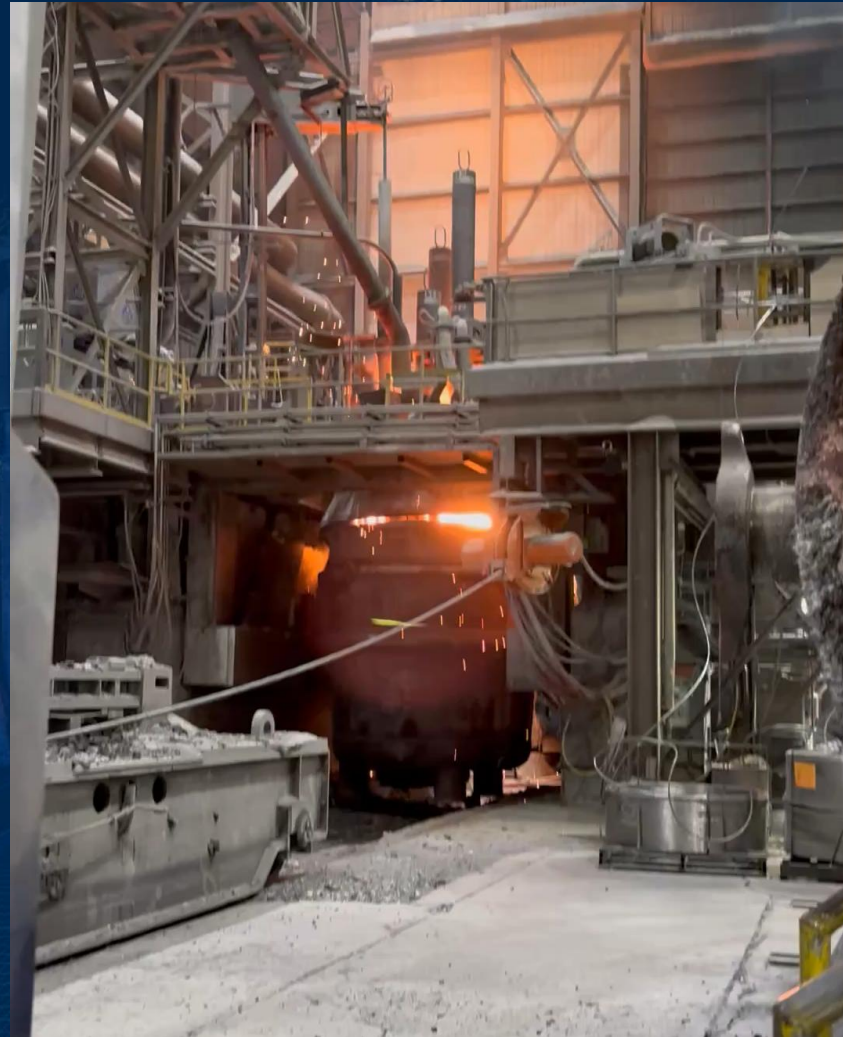
W8x8 to W36x12 HP8 to HP16



PZC



Melting, Ladle Refining and Casting Processes



7 Near Net Shape Sizes

PTB Casting

Tagging Robot



PTB Rolling Mill

Reheating Process

- Two reheating furnaces, Preheat and Reheat
- Stein Heurtey design (FIVES)



PTB Rolling Mill

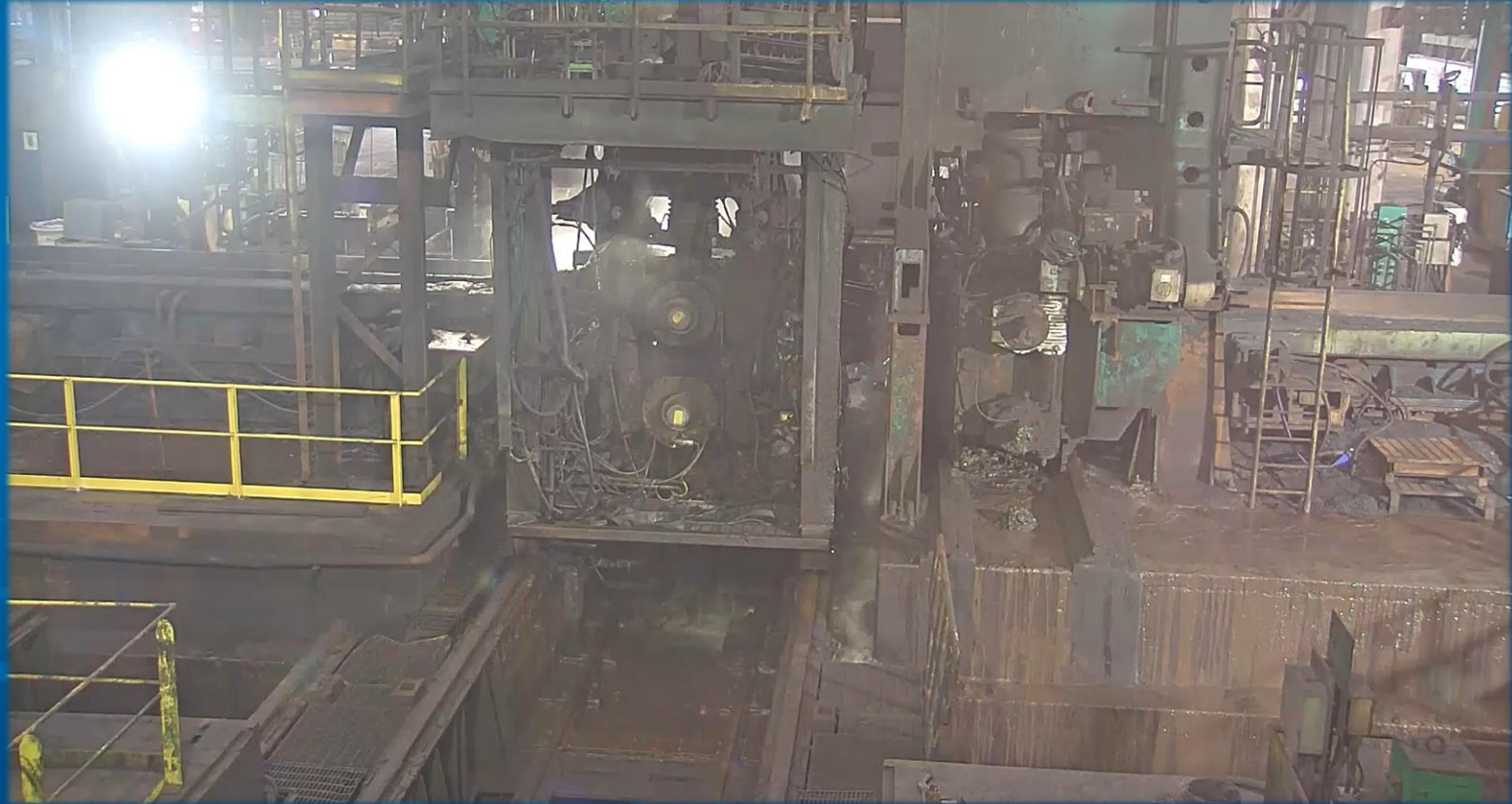
Reheat Furnace



PTB Rolling Mill

Reversing Rougher

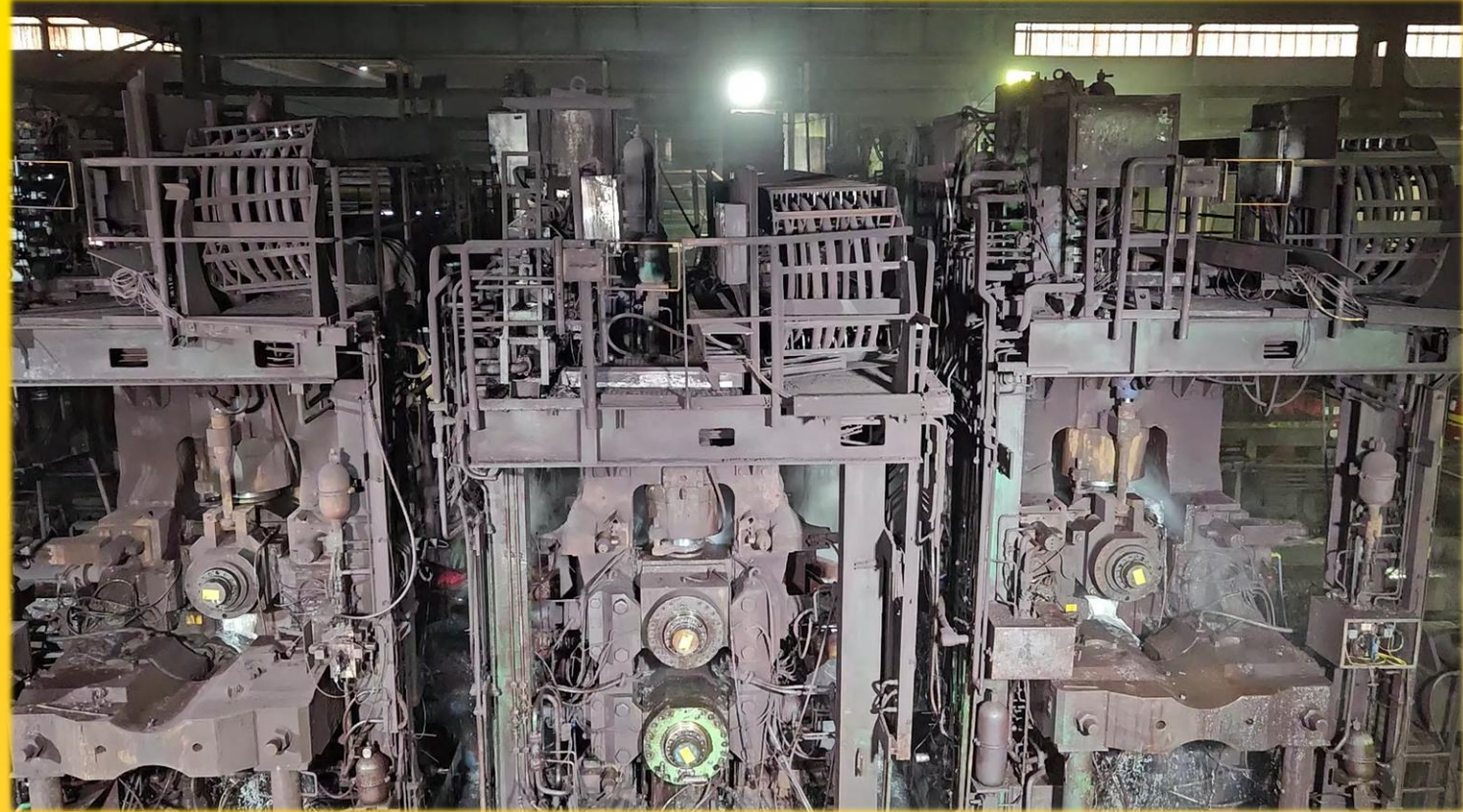
- Vertical and Horizontal Stands
- 1-7 reversing passes



PTB Rolling Mill

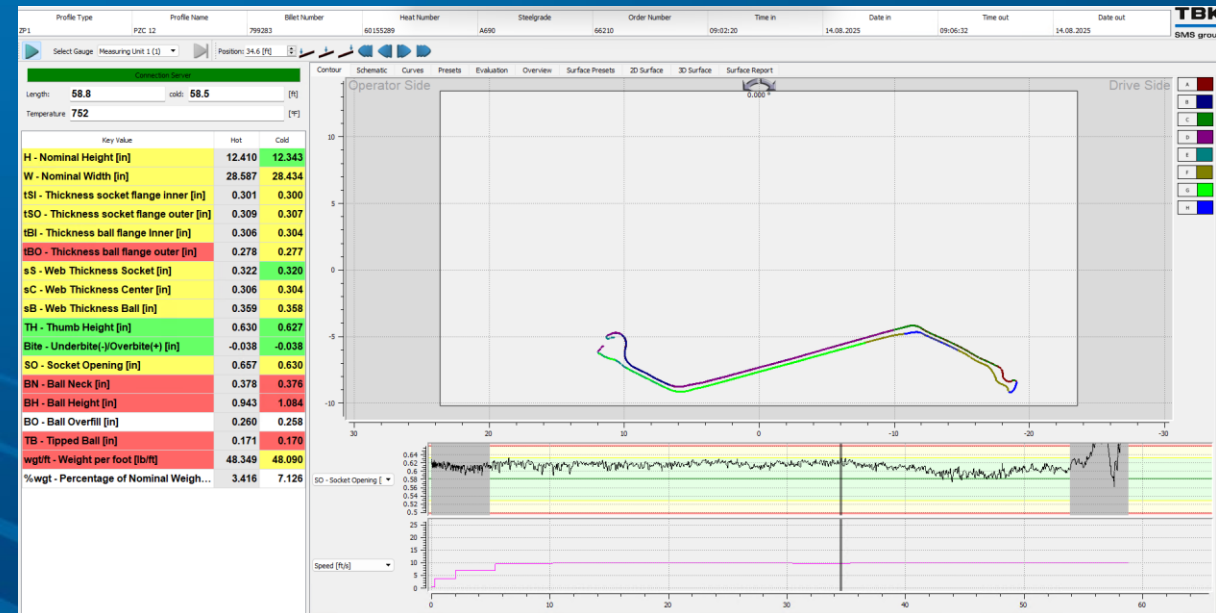
Reversing Tandem Mill

- Three stands
 - 2 Universal/ 1 Horizontal
- 3-9 reversing passes



PTB Rolling Mill

Bar Gauge



PTB Rolling Mill

Cooling Bed



PTB Finishing

Straightener



PTB Finishing

Cold Saws



PTB Finishing

Stacker



PTB Finishing

Banding & Tagging



PTB Rolling Mill

Roll Shop



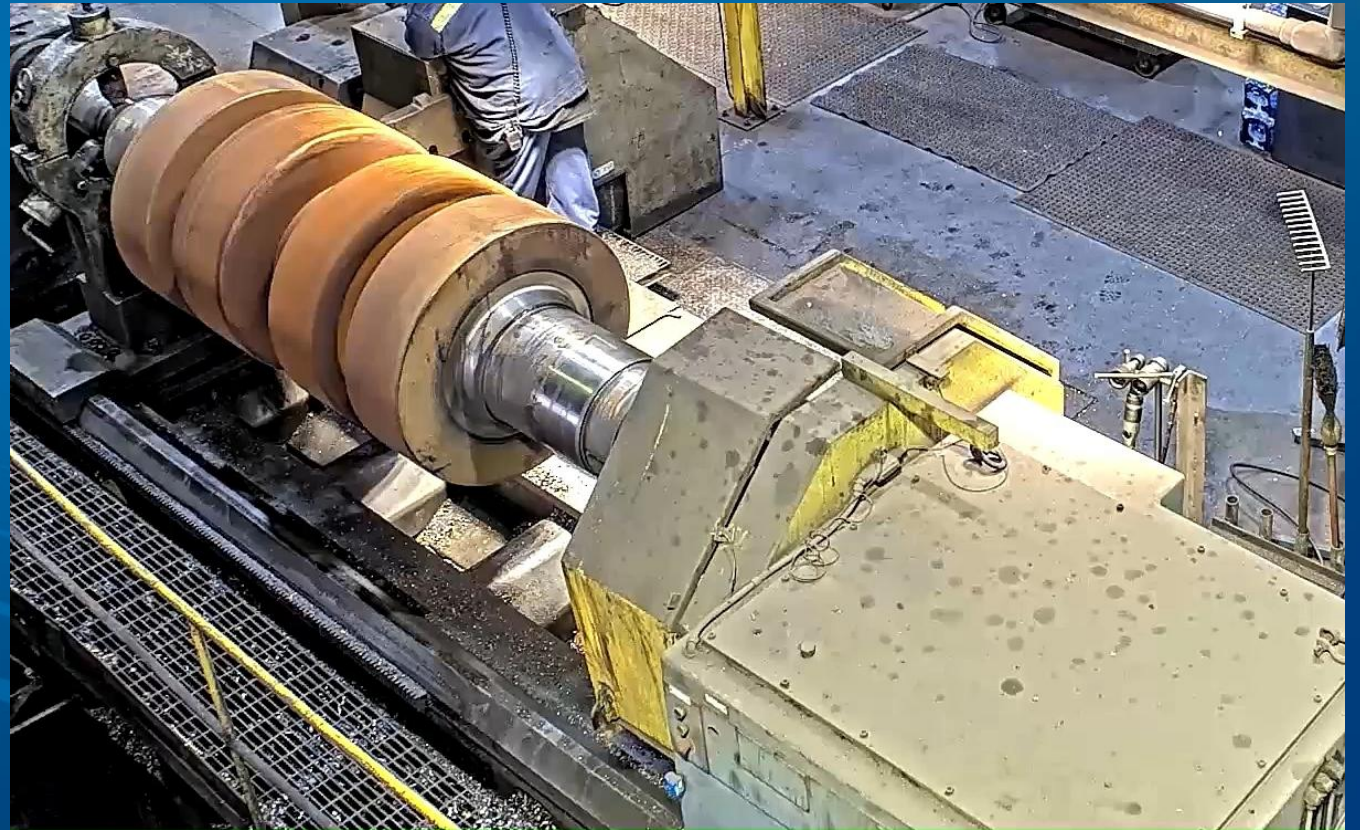
PTB Rolling Mill

Roll Shop



PTB Rolling Mill

Roll Shop



Questions

Contact: felipe.paiva@gerdau.com